



"NO MORE TEARS" Ozzy Osbourne

As heard on *No More Tears* (EPIC)

Words and Music by Ozzy Osbourne, Zakk Wylde, Randy Castillo, Michael Inez and John Purdell • Transcribed by Andy Aledort

Gtrs. 1 and 3 are in drop-D tuning down one half step (low to high: D \flat A \flat D \flat G \flat B \flat E \flat).

Gtr. 2 (synth arr. for gtr.) is in standard tuning down one half step (low to high: E \flat A \flat D \flat G \flat B \flat E \flat).

Bass tuning (low to high): D \flat A \flat D \flat G \flat .

All notes and chords sound one half step lower than written (key of D \flat).

Gtrs. 1 and 3 chords:



Gtr. 2 chords:

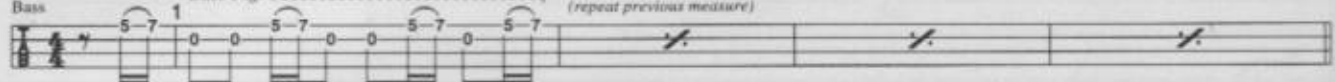


A Intro (0:00)

Moderately $\text{♩} = 100$

N.C.(D)

Bass Fig. 1

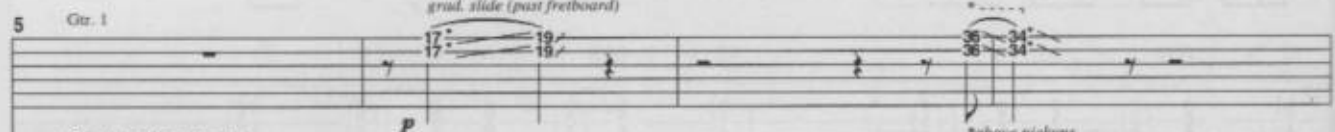


D

Em/D

Dm7

B \flat /D



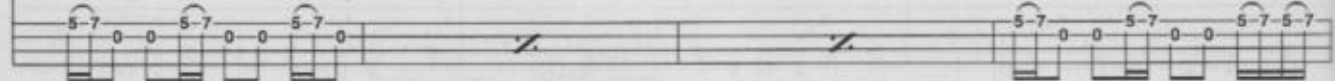
Gtr. 2 (synth arr. for gtr.)
Rhy. Fig. 1

end Rhy. Fig. 1



Bass
Bass Fig. 2

Bass Fig. 3



D

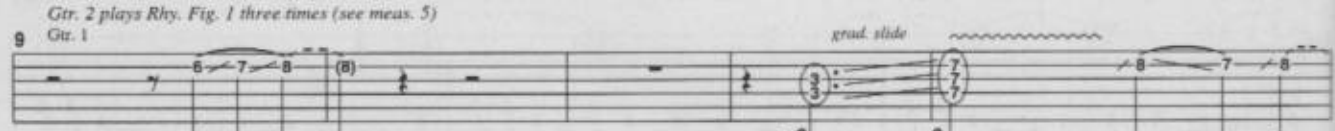
Em/D

Dm7

B \flat /D

D

Em/D



Bass plays Bass Fig. 1 four times (see meas. 1)

mf

f Bass plays Bass Fig. 2 three times (see meas. 5)

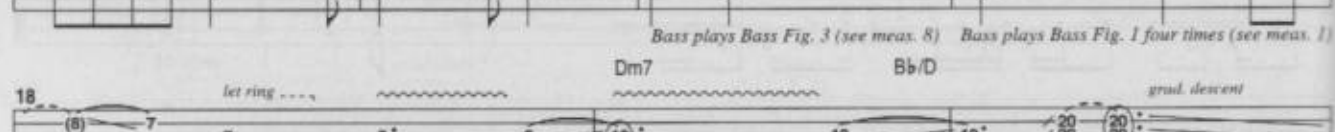


Dm7

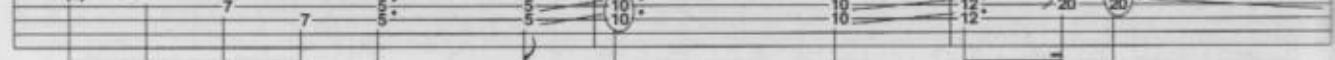
B \flat /D

D

Em/D



Bass plays Bass Fig. 3 (see meas. 8) Bass plays Bass Fig. 1 four times (see meas. 1)



Dm7

B \flat /D

grad. descent

Copyright © 1991 MONOWISE LTD. and JOHN PURDELL MUSIC

All Rights for the U.S.A. and Canada Controlled and Administered by EMI VIRGIN MUSIC, INC. and EMI VIRGIN SONGS, INC. All Rights Reserved. International Copyright Secured. Used by Permission. Reprinted by Permission of Hal Leonard Corporation

"NO MORE TEARS"

B 1st and 3rd Verses (0:53, 5:29)

1. The light in the window is a crack in the sky
 3. Now that it's over can't we just say goodbye
 N.C.(D5)

D5

D5 F5 D5
 w/o slide
 P.M.

Bass plays Bass Fig. 2 twice (see meas. 5)

Bass plays Bass Fig. 2 (see meas. 5)

Bass plays Bass Fig. 3 (see meas. 8)

A stairway to darkness in the blink of an eye
 I'd like to move on and make the most of the night

A \flat 5 G5 F5 G5 F5 D5 A \flat 5

G5 N.C.

D5

F5 D5

Bass plays Bass Fig. 1 twice (see meas. 1)

pitch: C

Bass plays Bass Fig. 2 (see meas. 5)

Bass plays Bass Fig. 3 (see meas. 8)

A levee of tears to learn she'll never be coming back
 Maybe a kiss before I leave you this way

A \flat 5 G5 F5 G5 F5 A \flat 5

G5 F5 G5 F5

D5

F5 D5

Bass plays Bass Fig. 1 twice (see meas. 1)

Bass plays Bass Fig. 2 (see meas. 5)

Bass plays Bass Fig. 3 (see meas. 8)

The man in the dark will bring another attack
 Your lips are so cold I don't know what else to say

A \flat 5 G5 F5 G5 F5 D5 A \flat 5

N.C.

D5

F5 D5

Bass plays Bass Fig. 1 twice (see meas. 1)

pitch: C

Bass plays Bass Fig. 2 (see meas. 5)

Bass plays Bass Fig. 3 (see meas. 8)

C Pre-chorus (1:31, 2:36, 6:06)

1. Your mama told
 2. I see the man
 3. I never wanted

E5/D

A \flat 5 G5 F5 G5 F5 A \flat 5

G5 F5 G5 F5

D5

37 Gtr. 1

Rhy. Fill 1 (5:55)

P.H.

Gtr. 1 w/o slide

Rhy. Fill 2 (6:06)

Gtr. 1 w/o slide

P.M. ..

"NO MORE TEARS"

The red light goes on to say it's
D5

55

A \flat 5 G5 F5 G5 F5 A \flat 5 N.C.

P.M. -----

P.H. 1 1/2

pitch: E \flat

Bass plays Bass Fig. 1 twice (see meas. 1)

Bass plays Bass Fig. 2 (see meas. 5)

go back to pre-chorus **C**

58

time to begin

slide

F5 D5 A \flat 5 G5 F5 G5 F5 A \flat 5 G5 F5 G5 F5

Bass plays Bass Fig. 3 (see meas. 5)

Bass plays Bass Fig. 1 twice (see meas. 1)

F (3:18)

D5 N.C.

61 Gtr. 1

Gtr. 2 (synth strings arr. for gtr.) (repeat previous two measures) 2

Gtr. 3 (synth strings arr. for gtr., doubled one octave lower) P.M. -----

65

15 14 13 (13) 12 16 15 13 15 16 15 13 15 16 15 13 15 16 15 13 15

12 12 12 12 15 15 15 15 15 15 15 15 15 15 15 15 15 15 15 15

1 5

G Interlude (3:37)

Slower ♩ = 66

Bm G7

let ring throughout

Gtr. 2 (piano arr. for gtr.)

Gtr. 3 (piano arr. for gtr.)

69

10 10 10 10 10 10 10 10 10 10 10 10 10 10 10 10 10 10 10 10

12 12 12 12 12 12 12 12 12 12 12 12 12 12 12 12 12 12 12 12

11 11 11 11 11 11 11 11 11 11 11 11 11 11 11 11 11 11 11 11

10 10 10 10 10 10 10 10 10 10 10 10 10 10 10 10 10 10 10 10

9 9 9 9 9 9 9 9 9 9 9 9 9 9 9 9 9 9 9 9

5 5 5 5 5 5 5 5 5 5 5 5 5 5 5 5 5 5 5 5

(spoken.) It's just a sign of the times going forward in reverse Still these were our first It's just a hand in the bush

Bm G7 Bm G7

71

12 10 10 10 10 10 10 10 10 10 10 10 10 10 10 10 10 10 10 10

10 11 12 11 12 11 12 11 9 12 10 12 10 12 10 12 10 12 10 12

9 8 7 6 5 9 8 7 6 5 9 8 7 6 5 9 8 7 6 5

9 8 7 6 5 9 8 7 6 5 9 8 7 6 5 9 8 7 6 5

"NO MORE TEARS"

75

E Esus4 E/G# D6 Dmaj7 E Esus4 E/G#

Qtr. 1 *w/delay* *w/slide*

let ring throughout
Qtr. 2 (piano arr. for gtr.)

pp *pp* *mf*

*repeat previous chord
Bass synth (string bass arr. for elec. bass)

78

F(#4) F G Gsus4 D C6 C Cadd#4 C

w/o slide

pp *mf*

Rhy. Fig. 2

Bass Fig. 4

81

Bb G

full full full full

end Rhy. Fig. 2

end Bass Fig. 4

83

D C6 C Cadd#4 C Bb

Gtr. 2 repeats Rhy. Fig. 2 (see meas. 79)

full 1/2 1/2 full

Bass repeats Bass Fig. 4 (see meas. 79)

ALC
Acoustic
This
tick
fascin
with le
and ex
up-anc
note-f
transc
the big
first-r
from t
and de
of all t
and m
- all
Subscr
GITA
AC

"NO MORE TEARS"

G **G5**

speed up

Gr. 1 $\frac{1}{2}$ full full full full full full $\frac{1}{2}$

86 15 15 (15) 15 15 15 15 (15) (15) 13 15

Gr. 3 P.M.

Bass (elec.)

5 5 5 5 5 5 5 5 5 5 5 5 5 5 5

H **Guitar Solo (4:43)**

Faster ♩ = 100

F5 G5 F5 G5 D5^V C5 D5^V

88 full full full P.M. $\frac{1}{4}$ P.M. ...

13 10 13 10 12 10 10 12 (12) 10 12 12 11 10 10 12 10 12 12 12 10 10 11 12

Rhy. Fig. 3 P.M.

Bass P.M.

Bass Fig. 5

3 3 5 5 5 5 (5) 3 5 3 5 5 5 3 7 5 7 3

F5 G5 F5 G5 D5^V C5 D5^V

90 full P.M. P.M. ... P.M. $\frac{1}{2}$ full

12 (12) 10 12 12 12 10 12 12 10 12 10 13 (13) 10 13 10 12 10 10 13 10 12 10 10 12 (12) 10 12 10 12

Bass plays Bass Fig. 5 twice simile (see meas. 88)

F5 G5 F5 G5 D5 C5 D5^V

92 full $\frac{1}{4}$ $\frac{1}{2}$ $\frac{1}{2}$ $\frac{1}{4}$

15 (15) 13 15 15 13 15 13 X 15 (15) 13 14 13 X 15 15 (15) 13 15 (0)

F5 G5

94 13-10-13-10 13-10 13-10 13-10 13-10 13-10 15-13 15-13

Gr. 1

Gr. 3

Bass

3 3 3 3 3 3 5 5 5 5 5 5

*repeat previous beat

