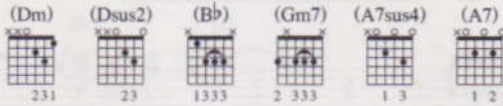


Love, Reign O'er Me

Words and Music by Peter Townshend
from The Who - *Quadrophenia*

Transcribed by Jim Schustedt



Gtr. 1: Tune down 1/2 step, capo II:
(low to high) E^b-A^b-D^b-G^b-B^b-E^b

Gtr. 2: Tune down 1/2 step:
(low to high) E^b-A^b-D^b-G^b-B^b-E^b

Intro

Free time

Slow ♩ = 71

*Dsus2

(Rain, piano & tympani)
57 sec.



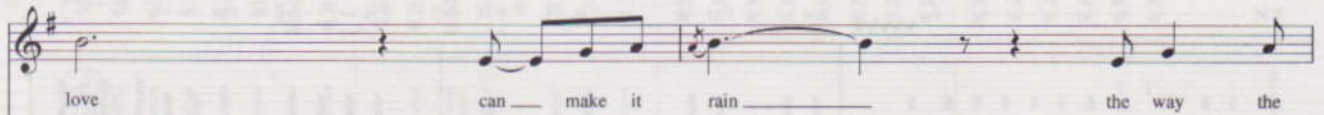
*Implied by piano.

1. On - ly

Verse

Esus4

** (Dsus4)



Rhy. Fig. 1

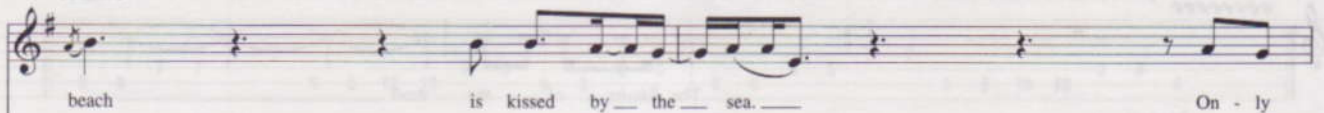
Gtr. 1 (acous.)



**Symbols in parentheses represent chord names respective to capoed guitar.
Symbols above reflect actual sounding chords. Capoe fret is "0" in tab.

Dadd9

(Cadd9)



End Rhy. Fig. 1



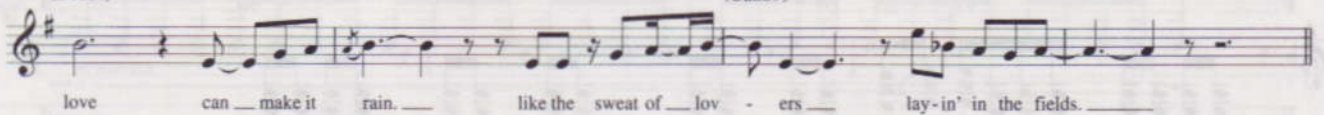
Gtr. 1: w/ Rhy. Fig. 1

Esus4

(Dsus4)

Dadd9

(Cadd9)



© 1972 Fabulous Music Ltd.

All Rights in the United States, its territories and possessions, Canada, Mexico and the Philippines Controlled by Towser Tunes, Inc.
International Copyright Secured All Rights Reserved
Reprinted by Permission of Hal Leonard Corporation

Chorus

* (Dm) (Dsus2) (Dm) (Dsus2) (Dm) (Dsus2) (Dm) (Dsus2) (Bb) (Gm7)

Gtr. 1

Love, _____ reign o'er me. _____

Riff A

Gtr. 2 (elec.)

mf
w/ dist.

15 14 12 15 12 14 12 11 9 7 5 4 2 0 2 0 2 0 2 2

End Riff A

*See top of first page of song for chord diagrams pertaining to rhythm slashes.

(Dm) (Dsus2) (Dm) (Dsus2) (Bb)

Rhy. Fig. 2

Love, _____ reign o'er me. _____ rain on _____

15 14 12 15 12 14 12 11 9 7 5 4

(Gm7) (A7sus4) (A7)

End Rhy. Fig. 2 Rhy. Fig. 3

End Rhy. Fig. 3

me. _____ Rain on _____ me. _____ 2. On-ly

2 4 4 4 2 2

dim.

Verse

Gtr. 1: w/ Rhy. Fig. 1 (2 times)

Gtr. 2 tacet

Esus4

(Dsus4)

Dadd9

(Cadd9)

love can bring the rain that makes you yearn to the sky. On-ly

Esus4

(Dsus4)

Dadd9

(Cadd9)

love can bring the rain that falls like tears from on high.

Chorus

Gr. 1: w/ Rhy. Fig. 2 (2 times)
Gr. 2: w/ Riff A (1st 3 meas.)

Em Esus2 Em Esus2 C
(Dm) (Dsus2) (Dm) (Dsus2) (Bb)

Love, _____ reign o'er me, _____ reign o'er me,

Am7 Em Esus2 Em Esus2
(Gm7) (Dm) (Dsus2) (Dm) (Dsus2)

reign o'er me. _____ Love, _____ reign o'er

Gr. 2

C Am7
(Bb) (Gm7)

Gr. 1: w/ Rhy. Fig. 3
B7sus4
(A7sus4)

me, rain on me, rain on me.

Bridge

B7 G
(A7) (F)

On the dry and dust - y road, the nights we spend a - part a - lone.

let ring - - - - - let ring - - - - - let ring - - - - - let ring - - - - -

Rhy. Fig. 4

Gr. 1

E (D) A/E (G/D) B/E (A/D) A/E (G/D)

I need to get back home to cool, cool, rain.

let ring----- | let ring-- | let ring----- | let ring-- | let ring-- | let ring-- | let ring----- |

w/ bar

End Rhy. Fig. 4

Gtr. 1: w/ Rhy. Fig. 4
G
(F)

I can't sleep and I lay and I think, the night is hot and black as ink, woo, oh, God, I need a drink of

Gtr. 2

let ring----- | w/ pick & fingers w/ pick let ring----- |

E (D) A/E (G/D) B/E (A/D) A/E (G/D)

cool, cool rain.

let ring----- |

Guitar Solo

Gtr. 1: w/ Rhy. Fig. 4 (2 times)

G
(F)

12 0 12 12 12 13 12 13 12 14 15 14 (14) 12 12 12 12 13 12 13 12 12 15 (15) 12 13 12 12 7

*T = Thumb on 6th string

E (D) A/E (G/D) B/E (A/D) A/E (G/D) G (F)

let ring - - - - - let ring - - - - - let ring - - - - - let ring - - - - - let ring - - - - - let ring - - - - - let ring - - - - - let ring - - - - - let ring - - - - -

9 9 10 10 12 12 12 12 7 15 7 5

7/9 7/9 9/11 9/11 11/13 11/13 13 13 7 7 12/16 5/7 7 5

E (D) A/E (G/D) B/E (A/D) A/E (G/D)

let ring - - - - - let ring - - - - - let ring - - - - - V - - - - -

7 3 3 5 3 0 0 4 4 5 4 5 3 5 3 9 10 12

5/7 4 4 5 4 5 7 7 7 7 9 11 13

Gtr. 1: w/ Rhy. Fig. 1 (2 times)

Esus4
(Dsus4)

Dadd9
(Cadd9)

9 7 5 7 7/9 7 5 7 7 (7) (7) 7/9 5 7

fdbk.

Esus4
(Dsus4)

Dadd9
(Cadd9)

14 (14) 12 12 14 12 14 12 14 12 12 12 12 12 14 15 15/17

8va

Chorus

Gtr. 1: w/ Rhy. Fig. 2 (2 times)

Gtr. 2: w/ Riff A

Em
(Dm)

Esus2 Em Esus2 C
(Dsus2) (Dm) (Dsus2) (Bb)

Am7
(Gm7)

Love, reign o'er me, reign o'er me, o - ver me, o - ver me. Oh,

Em
(Dm)

Em Esus2 Em Esus2
(Dm) (Dsus2) (Dm) (Dsus2)

C
(Bb)

love, _____ reign o'er me, _____ oh, _____

Gtr. 2

12 14 12 14 14 (14) 12 14 14 12 14 12 14 14 (14) 12 14 14 (14) 12 14 12 14 5 7 7 5 7 5 7

Am7
(Gm7)

Gtr. 1: w/ Rhy. Fig. 3
B7sus4
(A7sus4)

B7
(A7)

on _____ me. _____

8 5 12 14 14 (14) 12 14 12 9 9/11 (11) 5 4 (4) (4)

fdbk.

Outro
Free time

(A7)

(Dm)

Gtr. 1

Love.

(4)

Strap

(Dm) (Dsus2) (Dm) (Dsus2)

P.S.

fdbk.

Pitch: B